

First Lutheran – St. John Episcopal

25th Sunday after Pentecost

November 15, 2015



Evangelical Lutheran Church in America

God's work. Our hands.

Prayer Ventures

These petitions – one for each day this week – are offered as a guide for your own prayer life as together we pray for the needs of the world and give thanks for the ministries of our church.

Sunday, November 15

Unsettled by turmoil, danger and suffering in our world, we pray to be reminded of God's presence and goodness that ultimately brings healing and deliverance. We pray that we will not cower in fear but will instead urge one another to acts of goodness and hope in the world.

Monday, November 16

We remember in our prayers the lives and stories of people, communities and nations whose tragedies we have forgotten or have let slip from our attention. We ask God's forgiveness and pray that we will re-enter their stories and re-engage ourselves as caring brothers and sisters in Christ.

Tuesday, November 17

We ask God to bless the lives and physical labor of those who grow, harvest, build and create for our wellbeing, enjoyment and development.

Wednesday, November 18

ELCA missionary Jeffrey Truscott teaches at the seminary in Singapore preparing church leaders for surrounding nations. We give thanks for his ministry and the far-reaching witness of the Lutheran Church in Singapore.

Thursday, November 19

We believe all are invited to open Scripture and join in conversations of faith and God's work in the world. We ask the Holy Spirit to make us eager witnesses to our faith and to the stories of God's love that have changed our lives.

Friday, November 20

As we further explore the universe and planets, we pray that we are mindful of God, the creator of all that exists, and that humility, respect for creation and appreciation of God's handiwork will guide our scientific endeavors.

Saturday, November 21

We continue to pray for the welcoming and settling of refugees in Europe and elsewhere. We ask God for the strength and wisdom to meet this human crisis with compassion and respectful solutions.

Community Thanksgiving Dinner



**Thursday, November 26
at the Raymond Elks Lodge**

Come! Eat! Give Thanks!

This free meal is sponsored by the Willapa Harbor Ministerial Association (WHMA). For more information call the lodge, 942-1292, but all are welcome! First Lutheran / St. John Episcopal will be providing 15 (or more) pies. If you'd like to contribute please speak with Deb Sturgill or Pat Jones.

If Thanksgiving Day is in fewer than 3 weeks, can Christmas be far behind?



Donations for Toy House will be Blessed at Worship on November 29.

November 29 is the *First Sunday in Advent* and that is the day we will be blessing donations of new, unwrapped gifts for boys and girls aged 0 – 18. (We are told that items for teenagers are especially needed.) Thank you for keeping children in need in your minds and hearts as you prepare for welcoming the infant Jesus this Christmas.

Sunday, December 6 Ham Dinner



Before December gets too busy on all your calendars, please join us after worship for a ham dinner with all the fixins (YOURS). You are invited to bring your favorite side dish to go along with the ham which will be provided by Faith Guild. We will also enjoy a Christmas carol sing-a-long. Its unlikely that it will snow but let's get in the festive spirit!

♪ Fa la la la la ♪ la la la la ♪

Fostering Generosity

Late fall is the traditional time in the church to talk “stewardship”. Let’s shift our focus just a slant and consider the following:

- Reflect upon how you learned generosity. Can you share an example with someone during coffee hour or at one of your meetings or workparties? Pray for a self-giving attitude to continue in your life.
- Reflect upon a time of wealth or poverty in your life. Talk with others about these experiences of scarcity and abundance.
- Do you believe that generous hearts are lived out in generous actions and, if so, what are the ways you live generously? Celebrate them! And be sure to show your thanks for others’ living generously.

On the calendar....

Birthdays

November 21 RYKER VAUGHN
November 22 THELMA CRAWFORD
November 23 VIRGINIA CARLSON

Anniversaries

November 23 BOB & MARCIA UDD
November 29 RALPH & KITTY TURNER

Are we missing your birthday or anniversary? Please let us know and we will update our directory.

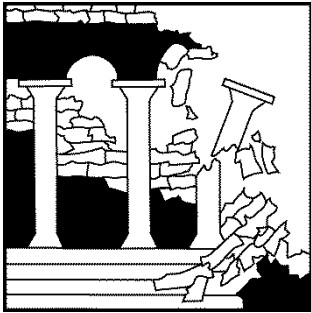
Bible Study Monday, Nov. 16 at 10 AM followed by lunch at a local restaurant!

AA Meetings Mondays and Fridays at 12 Noon

Council Meeting Friday, Nov. 13 at 3 PM

Maranatha Estudio de la Biblia Tuesdays 7 PM

Legacy Food Bank Open Wednesdays 2-5:30 PM



Real Strength in Community of Faith

What makes something strong? Is steel strong because of its ability to withstand stress from many directions? Is wood strong because of its ability to absorb impact while remaining intact? Is the material of a spider’s web strong because of its tensile strength-to-weight ratio? Things are strong for many reasons. The temple in Jerusalem was thought to be stronger and more permanent than anything, yet Jesus says in Mark, “Not one stone will be left here upon another; all will be thrown down” (Mark 13:2). Jesus shows hearers that true strength is not built upon the oppression of widows (Mark 12:41-44).

Many of the world’s most prized structures are built on the shoulders of the poor and oppressed. How many homes in poorer areas of cities have been destroyed by the need for a new or wider highway? How many workers living in poverty died building the Golden Gate or Brooklyn Bridges, the Hoover Dam or the Empire State Building? In order for human beings to build structures of great strength, they must rely on sacrifice and compromise. Can any human standard of strength be achieved without making something else weak?

Real strength, however, is not shown in things built by human hands. Real strength is found in the hands themselves. True strength is shown in workers reporting to work day after day in impossible conditions because it’s the only way to feed their family. It is shown by an entire community of God’s people linking their trembling hands as they share the “confession of our hope without wavering” (Heb. 10:23). The new, true temple, Jesus’ faithful strength, succumbs in weakness to human-made nails. While the nails lie rusting away, the wounded hands and body rise again to break bread with all on the journey down the path of life.

The Lutheran Magazine and Christ in Our Home Devotionals

Because First Lutheran Church has a subscription to *The Lutheran* for each of its members we are able to get a half-price deal. If you’d like to contribute toward the cost of your receiving *The Lutheran*, a \$10 donation would cover one year; please memo your check “The Lutheran”. Similarly, the cost of one year’s Christ in Our Home regular size booklets (delivered quarterly) is \$5 and the large print is \$10. Any donations are welcomed. If you are not currently receiving *The Lutheran* in your mail please let us know so we can make sure you are added to our subscription list.